

ORIGINAL INSTRUCTIONS



1500W 30L
Model No.
VKE1530SF 1008



IPX4






TABLE OF CONTENTS

SECTION	PAGE
Symbols.....	2
Safety Information	3
Unpacking and Checking Carton Contents	5
Assembly	7
Operation.....	8
Maintenance.....	10
Troubleshooting.....	11
Technical Data	12
Recycling and Disposal	12
Exploded View.....	13
Parts List.....	14

Thank you for purchasing this Vacmaster® wet and dry vacuum cleaner. Feel confident that with Vacmaster® you are obtaining a high-quality product that is engineered for optimal performance. This vacuum cleaner is suitable for use with both liquids and dry materials.

FOR YOUR SAFETY: CAREFULLY READ AND UNDERSTAND ALL INSTRUCTIONS.

SYMBOLS

	Caution.
	Read instruction manual. Failure to follow the warnings and instructions may result in electric shock, fire and/or serious injury.
	Appliance in which protection against electric shock does not rely on basic insulation only but in which additional safety precautions are provided, such as double insulation or reinforced insulation, there being no provision for protective earthing or reliance upon installation conditions.

SAFETY INFORMATION

READ AND UNDERSTAND ALL INSTRUCTIONS BEFORE USING THIS VACUUM CLEANER.

When using the equipment, a few safety precautions must be observed to avoid injuries and damage. Please read the complete operating manual with due care. Keep this manual in a safe place so that the information is always available. If you give the equipment to any other person, give them these operating instructions as well. We cannot accept any liability for damage or accidents which arise due to a failure to follow these instructions and the safety information.

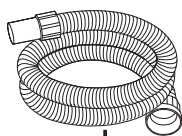
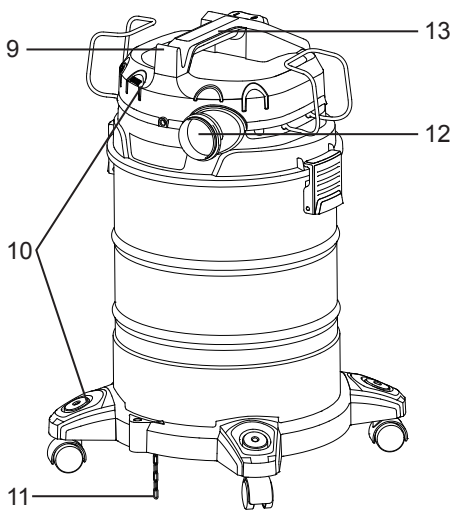
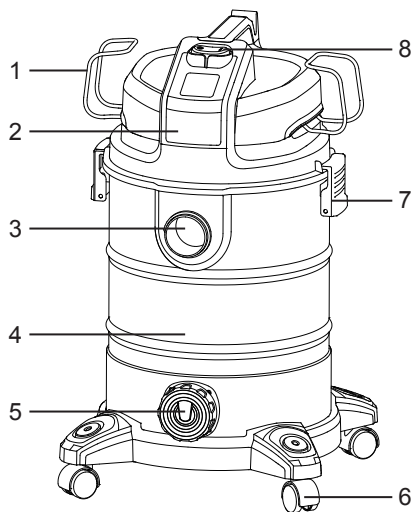
- Never leave the appliance switched on unattended, if you leave the work area, switch the appliance off or unplug it from the power supply.
- Do not vacuum or use this wet and dry vacuum cleaner near flammable liquids, gases or explosive vapours like gasoline or other fuels, lighter fluids, cleaners, oil-based paints, natural gas, hydrogen, or explosive dusts like coal dust, magnesium dust, grain dust or gun powder. Sparks inside the motor can ignite flammable vapours or dust.
- This vacuum cleaner is not suitable for the vacuuming of asbestos or asbestos dust.
- Do not vacuum anything that is burning or smoking, such as cigarettes, matches, or hot ashes.
- Ensure the hose and connections are always pointed away from the users face, hair, ears and eyes during operation and never direct the nozzle towards persons or animals.
- Clear the working area of any items or possessions that you do not wish to be vacuumed before operation.
- Keep cord away from heated surfaces.
- Do not expose to rain. Store indoors.
- Do not unplug by pulling on the cord. To unplug, grasp the plug, not the cord.
- Do not use with damaged cord, plug or other parts.
- Do not pull or carry by cord, use cord as handle, close a door on cord, or pull cord around sharp edges or corners.
- Do not handle the plug or vacuum cleaner with wet hands.
- To reduce the risk of health hazards from vapours or dusts, do not vacuum toxic materials.

- Frequently check that the float valve positioned underneath the motor is able to move freely.
- Do not use or store near hazardous materials.
- Do not use this vacuum cleaner with a torn filter or without the filter installed.
- Do not allow to be used as a toy. Close attention is necessary when used by or near children.
- To reduce the risk of injury from accidental starting, unplug power cord before changing or cleaning filter.
- Unplug from power supply when not in use and before carrying out maintenance.
- Do not cover the ventilation openings. Do not vacuum with any ventilation openings blocked; keep free of dust, lint, hair or anything that may reduce air flow.
- Keep hair, loose clothing, fingers, all parts of body away from openings and moving parts.
- If the supply cord is damaged, it must be replaced by the manufacturer, a qualified service agent or similarly qualified persons in order to avoid a hazard.
- This appliance can be used by children aged from 8 years and above and persons with reduced physical, sensory or mental capabilities or lack of experience and knowledge if they have been given supervision or instruction concerning use of the appliance in a safe way and understanding the hazards involved.
- Children shall not play with the appliance.
- Cleaning and user maintenance shall not be made by children without supervision.
- For additional protection: It is recommended that this vacuum cleaner can be used in conjunction with residual current device (RCD) with a rated residual current of 30mA or less.
- If foam or liquid escapes from the machine, switch off immediately.
- Check the float valve regularly to make sure it is moving freely and examine it for signs of damage.

When using as blower:

- Direct air discharge only at work area.
- Do not use the wet and dry vacuum cleaner as a sprayer.
- Do not direct air at bystanders.
- Keep children away when blowing.
- Wear safety goggles.

UNPACKING AND CHECKING CARTON CONTENTS



14



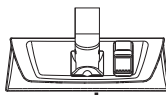
15



16



17



18



19



20



21



22



23



24



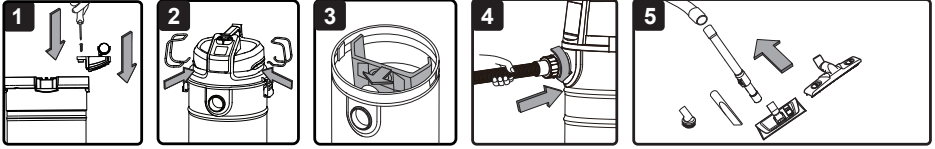
25



26

1	Hose Storage Rack	16	Handle with Air Flow Regulation
2	Power Head	17	Crevice Tool
3	Suction Port	18	Dual Mode Floor Nozzle
4	Container	19	Hard Floor Nozzle
5	Drain Cap	20	Round Dust Brush
6	Caster	21	Cartridge Filter (pre-installed)
7	Latch	22	Filter Retainer (pre-installed)
8	On/Off Switch	23	Dust Bag
9	Cord Wrap Hook	24	Accessory Bag
10	Accessory Storage	25	Screw (x4)
11	Anti-static Chain	26	Instruction Manual
12	Blower Port		
13	Carry Handle		
14	Suction Hose		
15	Telescopic Tube		

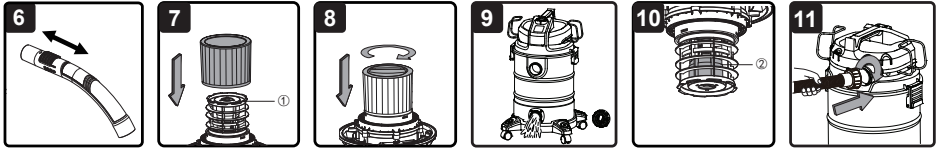
ASSEMBLY



NOTE: A Phillips screwdriver is required. 

1. Remove all the contents from inside of the vacuum cleaner container.
 2. Turn the container upside down and insert the feet with casters into the slots and apply pressure until they click into place. Secure them with supplied screws (Fig. 1).
 3. To position the hose storage rack, insert one end into the channel on the side of the power head, making sure it is secured in place. Apply inward pressure to the other side and insert it into the opposite channel (Fig. 2).
 4. Your vacuum cleaner comes ready for both wet and dry vacuum cleaning with the cartridge filter pre-installed. If the cartridge filter is not installed, refer to page 8.
 5. Optionally, for improved dust filtration, fully fit the dust bag flange onto the inlet stub (Fig. 3). Do not use a dust bag when wet vacuuming.
 6. Secure the power head back on the container using the 2 side latches. Insert the locking end of the hose into the suction port of the container and turn clockwise to lock into place (Fig. 4).
 7. Choose the desired accessories and/or telescopic tube and push fit onto the hose nozzle (Fig. 5).
- NOTE:** The hard floor nozzle, crevice tool and round dust brush can be stored in the included accessory bag for easy storage.

OPERATION



1. Switching On/Off

Connect the mains plug to a suitable power outlet.

Position	Status
I	on
O	off



2. Wet & Dry Vacuum Operation



WARNING! ENSURE YOU READ, UNDERSTAND AND APPLY SECTION ENTITLED 'SAFETY INFORMATION'.

- 1) Verify that the correct filter is installed for wet or dry vacuuming and the container latches are secured.
- 2) Secure the locking end of the hose into the vacuum suction port.
- 3) Push the desired accessories onto the hose nozzle. The air flow regulation allows you to change vacuum cleaner suction. For best cleaning results, fully close the air flow regulation (Fig. 6).
- 4) Plug the power cord into a power outlet.
- 5) Turn on the motor by assigning the switch to the "I" ON position.
- 6) Once you have completed vacuuming, switch to the "O" OFF position and unplug the power cord from the power outlet.

NOTE: Empty the container, clean and dry the inside and outside after each use.

Installing Cartridge Filter:



WARNING: BEFORE INSTALLING, REMOVING OR CLEANING THE VACUUM CLEANER FILTER, ENSURE THAT THE VACUUM CLEANER IS SWITCHED OFF AND UNPLUGGED.

- 1) To prepare your vacuum cleaner for wet or dry vacuuming, install the cartridge filter over the filter cage (①) with the flat end of the filter towards the vacuum power head. Carefully push filter until it sits flush forming a tight seal (Fig. 7).
- 2) Place the filter retainer cap on top of cartridge filter over the raised lip and tighten the retainer lock clockwise to secure against the internal filter cage (Fig. 8).
- 3) Optionally, fully fit the dust bag flange onto the inlet stub. The vacuum cleaner can be used with or without dust bags.
- 4) Replace the power head, and secure it in place.



WARNING: DO NOT USE A DUST COLLECTION BAG FOR WET VACUUMING.

NOTE: After wet vacuuming, turn the machine off and remove plug from power supply; remove the drain cap and drain the liquid into a suitable receptacle or drain (Fig. 9). Remember to refit the container with the drain cap. Make sure the filters and container are dry and clean before dry vacuuming.

IMPORTANT: Check the filter regularly for optimal performance. An old or blocked filter will reduce suction performance.

IMPORTANT! The vacuum cleaner is equipped with a float valve (②) which is operational during wet suction (Fig. 10). The suction power decreases when the maximum filling level is reached. When this happens, switch the vacuum cleaner off immediately, and empty the container.



WARNING: KEEP BYSTANDERS CLEAR FROM BLOWING DEBRIS.

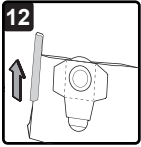
3. Blower Operation



WARNING: WEAR A DUST MASK IF BLOWING CREATES DUST THAT MIGHT BE INHALED.

- 1) Make sure the container and any collected waste is emptied before using as a blower.
- 2) Insert the locking end of the hose into the blowing port on the rear of the power head (Fig. 11).
- 3) Turn on the motor on by turning the switch to the 'I' ON position.
- 4) Once you have completed blowing, switch to the "O" OFF position and unplug the power cord from the power outlet.

MAINTENANCE



WARNING: REMOVE THE POWER CORD FROM THE POWER SUPPLY BEFORE CARRYING OUT ANY MAINTENANCE.

- 1) Keep all safety devices, air vents and the motor housing free of dirt and dust. Use a soft, dry brush to clean the equipment regularly.
- 2) Clear all dirt or debris from the collection tank after each use. Allow to dry before replacing the power head. Do not use cleaning agents or solvents; these may damage the appliance.
- 3) Check the hose, attachments, and power cord to verify that they have not been damaged or any debris is trapped and blocking airflow.

1. Cleaning Dust Bag

Remove the dust bag; remove the sealing clip from the dust bag and clear all dirt or debris from the dust bag after each use (Fig. 12). And clean it by gently tapping or brushing off dirt. Remember to refit the dust bag with the sealing clip. For optimal performance it is recommended to replace the old dust bag with a new one regularly.

2. Cleaning Cartridge Filter

Remove the cartridge filter and clean by gently tapping or brushing off dirt. For optimal performance it is recommended to replace the old filter with a new filter regularly.

TROUBLESHOOTING



WARNING: TO REDUCE THE RISK OF ELECTRIC SHOCK, UNPLUG BEFORE TROUBLESHOOTING.

Cleaning Performance

Vacmaster vacuum cleaners are tested for endurance. If your motor is operating, then the most likely cause for a loss in suction is a blockage or an opening in the vacuum.

To maintain a high cleaning performance from your machine, it is important to replace or clean filters as necessary. Replace full dust bags to prevent performance drops. A performance drop with clean filters can only be caused by a blockage in the tools or the hose.

PROBLEM	POSSIBLE CAUSE	SOLUTION
The appliance does not work.	No power.	Check the power supply and fuse.
	Functional fault in the power cord, switch, or motor.	Have the damaged part checked by qualified personnel or contact the after sales helpline.
Dust is escaping from the motor cover.	The filter is missing or damaged.	Install the filter correctly or replace it if it is damaged.
Low suction power and high operating noise / vibrations.	Dust bag is full.	Replace the dust bag.
	Suction nozzle, hose, or tank inlet is blocked.	Check the suction nozzle, hose, and tank inlet for obstructions.
	Cartridge filter is blocked.	Remove the cartridge filter and clean.
	Float valve has closed.	Empty the container of any liquid waste and ensure the float valve located underneath the filter is able to move freely.

TECHNICAL DATA

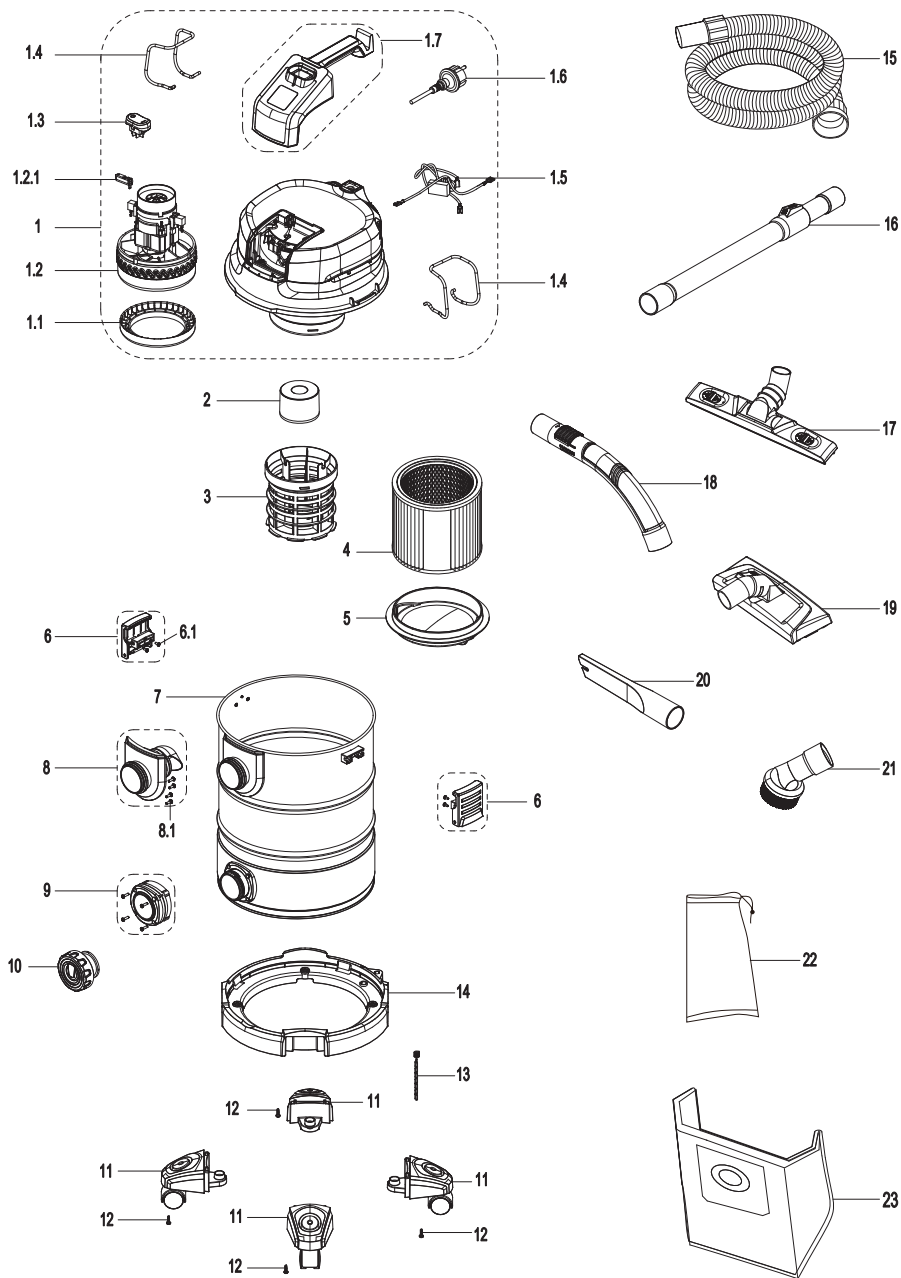
Model Number	VKE1530SF 1008
Motor	220-240V~50Hz
Power Input	1500W
Tank Volume	30L
Net Weight	9.72kg

RECYCLING AND DISPOSAL



This marking indicates that this product should not be disposed with other household wastes. The machine must be delivered in rigid packaging to avoid damage during transportation. The packaging and the machine itself are manufactured from recyclable materials and should be disposed of accordingly.

EXPLODED VIEW



PARTS LIST

Part	Drawing Number	Description	Quantity
1	551429101	Power Head Assembly	1
1.1	551008108	Motor Holder Sealing Ring	1
1.2	551429102	Motor Assembly	1
1.2.1	551021115	Carbon Brush Assembly	2
1.3	551425103	On/Off Switch	1
1.4	551059101	Storage Rack	2
1.5	551043102	Capacitor & Inductor Assembly	1
1.6	551429107	Power Cord	1
1.7	551157103	Handle Assembly	1
2	551005103	Float Valve	1
3	551036117	Filter Cage	1
4	551157113	Cartridge Filter	1
5	551021126	Filter Retainer	1
6	551429103	Latch Assembly	2
7	551429104	Container	1
8	551158106	Suction Port Assembly	1
9	551271102	Drain Port Assembly	1
10	551429105	Drain Cap with Gasket	1
11	551150105	Wheel Support Assembly	4
12	551017125	Screw	4
13	551021121	Anti-static Chain	1
14	551150104	Deck	1
15	551429110	Suction Hose	1
16	551155128	Extension Wand	1
17	551018116	Hard Floor Nozzle	1
18	551765103	Handle with Air Flow Regulation	1
19	551173101	Dual Mode Floor Nozzle	1
20	551109125	Crevice Tool	1
21	551001116	Round Dust Brush	1
22	551429111	Accessory Bag	1
23	551157120	Dust Bag	1

VKE1530SF 1008

12, SHALIN BUNGLOWS, B/H KARMAJYOT BUNGLOWS,
NR.S.P RING ROAD, SHILAJ, AHMEDABAD,
GUJARAT, 380058